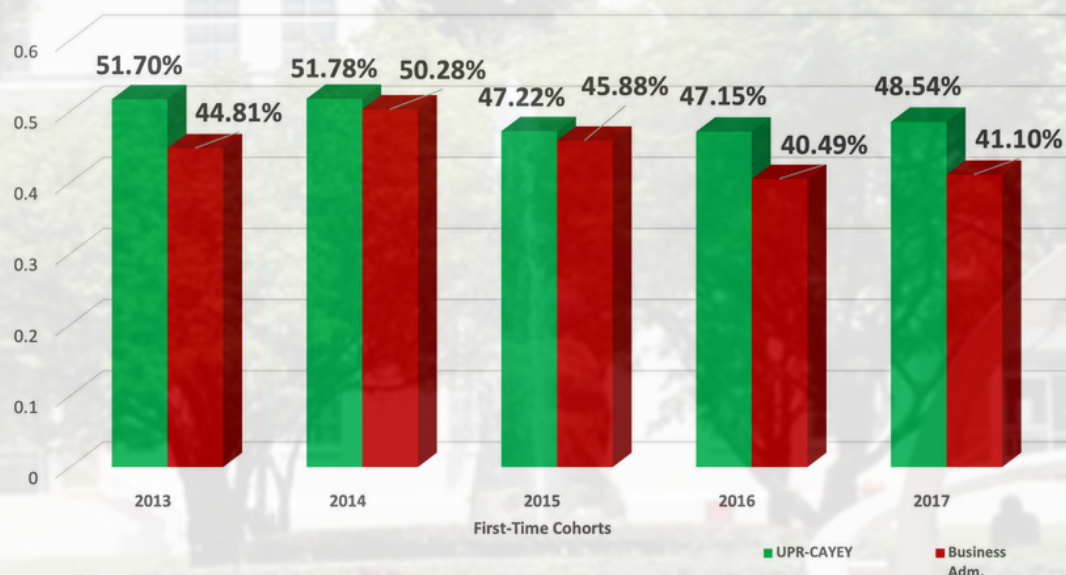


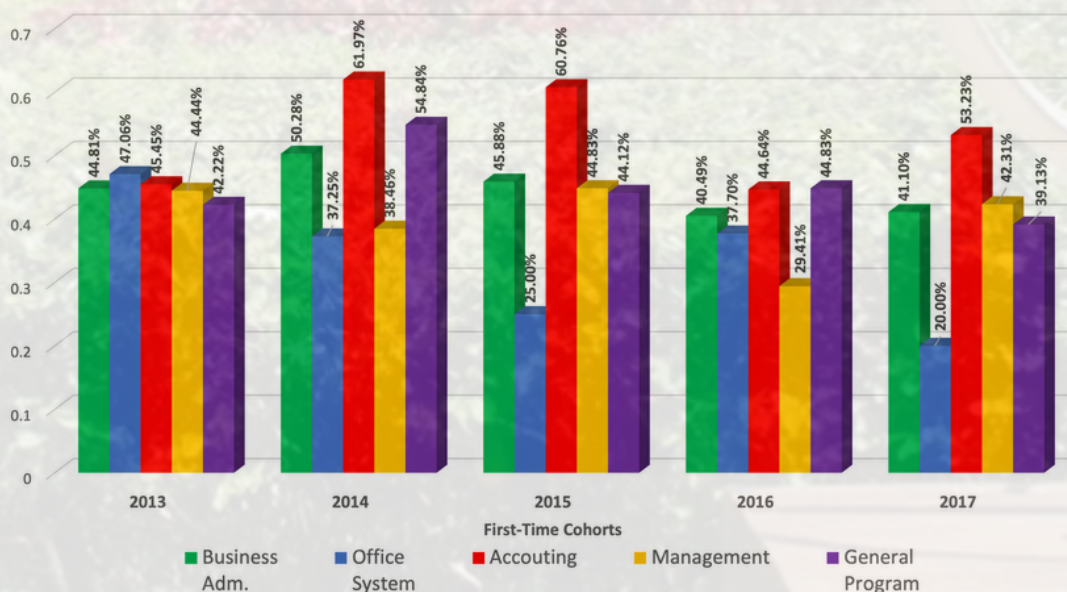
# RETENTION & GRADUATION RATES 2018-19 AL 2022-23 BUSINESS ADMINISTRATION



150% Graduation Rate of Business Administration Department and UPR-Cayey  
First-Time Cohorts 2013 to 2017



150% Graduation Rate by Academic Programs  
Business Administration Department  
First-Time Cohorts 2013 to 2017 UPR-Cayey



# EDUCATION PREPARATION PROGRAM

## RETENTION & GRADUATION RATES

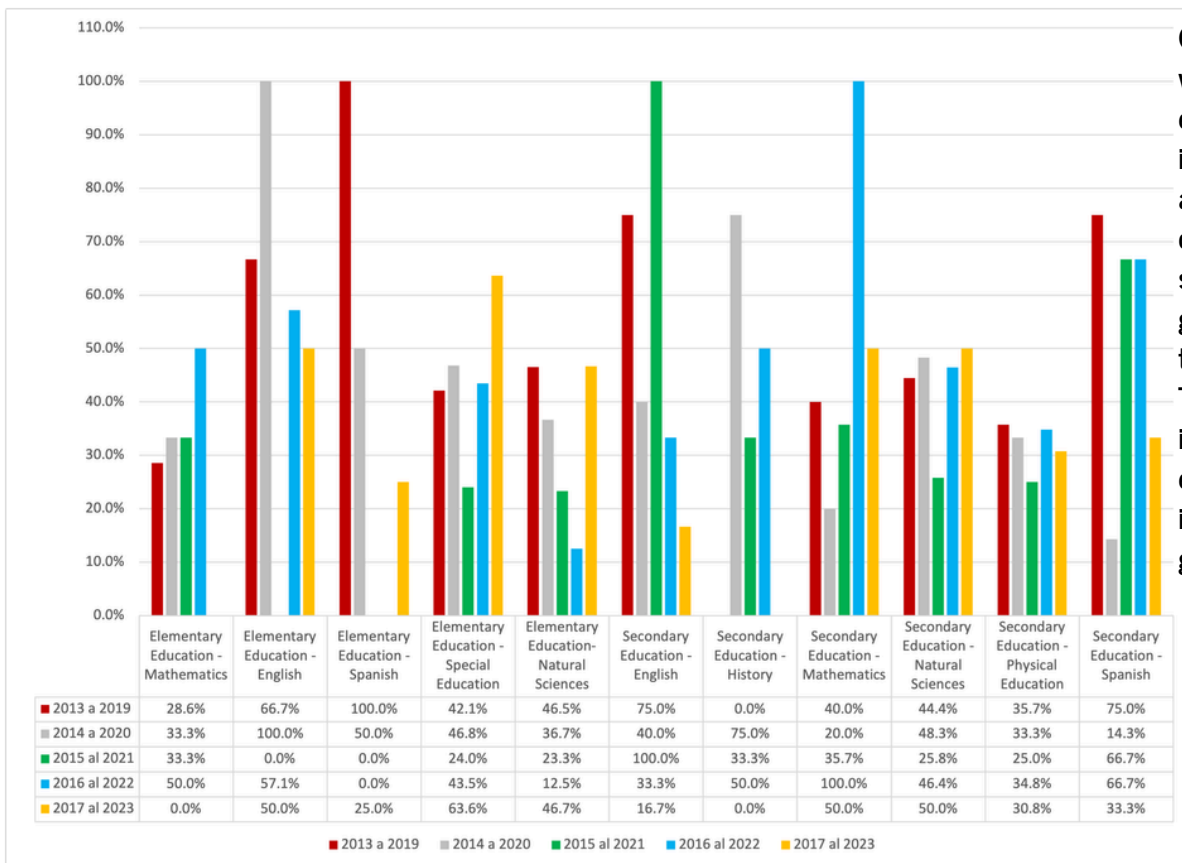
**Retention Rates for Education Program First to Second Year  
Cohorts 2013 to 2022**

Program	2013	2014	2015	2016	2017	2018	2019	2020	2021	2022
Elementary Education - English	66.7%	100.0%	50.0%	57.1%	75.0%	100.0%	50.0%	100.0%	100.0%	100.0%
Elementary Education - Mathematics	92.9%	100.0%	100.0%	100.0%			100.0%		50.0%	
Elementary Education - Science	88.4%	80.0%	80.0%	68.8%	66.7%	100.0%		50.0%	46.2%	71.4%
Elementary Education - Spanish	100.0%	50.0%		50.0%	100.0%	50.0%			100.0%	100.0%
Elementary Education - Special Education	73.7%	91.5%	76.0%	73.9%	100.0%	77.8%	100.0%	100.0%	100.0%	100.0%
Secondary Education - English	100.0%	80.0%	100.0%	100.0%	50.0%	90.0%		75.0%	50.0%	100.0%
Secondary Education - History	50.0%	100.0%	100.0%	50.0%						
Secondary Education - Mathematics	80.0%	100.0%	85.7%	100.0%	50.0%					
Secondary Education - Physical Education	76.2%	85.2%	82.1%	69.6%	100.0%	100.0%	57.1%	62.5%	46.4%	57.1%
Secondary Education - Science	94.4%	82.8%	83.9%	85.7%	90.0%	77.3%	80.0%	66.7%	50.0%	73.3%
Secondary Education - Spanish	87.5%	57.1%	100.0%	100.0%	66.7%	100.0%	100.0%	100.0%	60.0%	50.0%
Department of Education	84.2%	85.4%	82.2%	78.6%	81.5%	83.9%	78.3%	72.2%	51.8%	71.6%

Source: Office of Assessment and Institutional Research, UPR-Cayey.

**Retention:** The rate at which students persist in their educational programs at an institution, often expressed as a percentage of an entering class which enrolls for each succeeding academic year. e.g. The students who entered in 2013 pursued in the next academic year 2014.

**Graduation Rates for Education Program First Time Degree Seeking Students  
Cohorts 2007 to 2014**



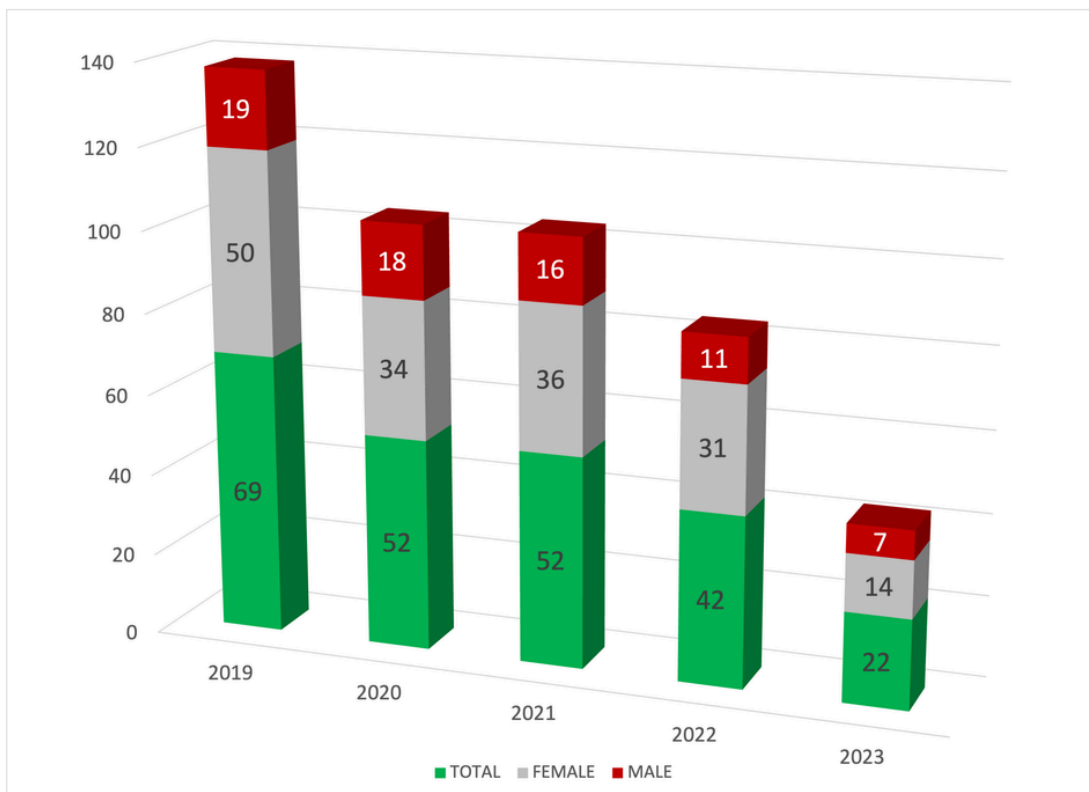
**Graduation Rate:** The rate at which students persist in their educational program at an institution, often expressed as a percentage of an entering class which enrolls for each succeeding academic year and graduates within the normal time period. The expected time to graduate is 150%, or six (6) years. e.g. The students who entered in 2013 were expected to graduate in 2019.

**Cohort 2017  
43.2%**

# TOTAL ENROLLMENT FOR LAST 5 YEARS

Programs	2019-2020	2020-2021	2021-2022	2022-2023	2023-2024
Elementary Education - Mathematics	8	9	9	6	4
Elementary Education - English	15	13	10	12	11
Elementary Education - Spanish	8	9	9	6	4
Elementary Education - Special Education	55	46	32	25	25
Elementary Education- Natural Sciences	28	19	26	28	28
Secondary Education - English	28	26	25	18	21
Secondary Education - History	2	0	0	0	0
Secondary Education - Mathematics	9	7	3		
Secondary Education - Natural Sciences	78	73	62	50	52
Secondary Education - Physical Education	71	58	60	57	48
Secondary Education - Spanish	20	15	20	16	11

# TOTAL AWARDS FOR LAST 5 YEARS



TRENDS IN THE PASSING RATE IN THE 2004-2024 TEACHER CERTIFICATION TESTS OF STUDENTS WHO IDENTIFIED AS COMING FROM THE UPR AT CAYEY



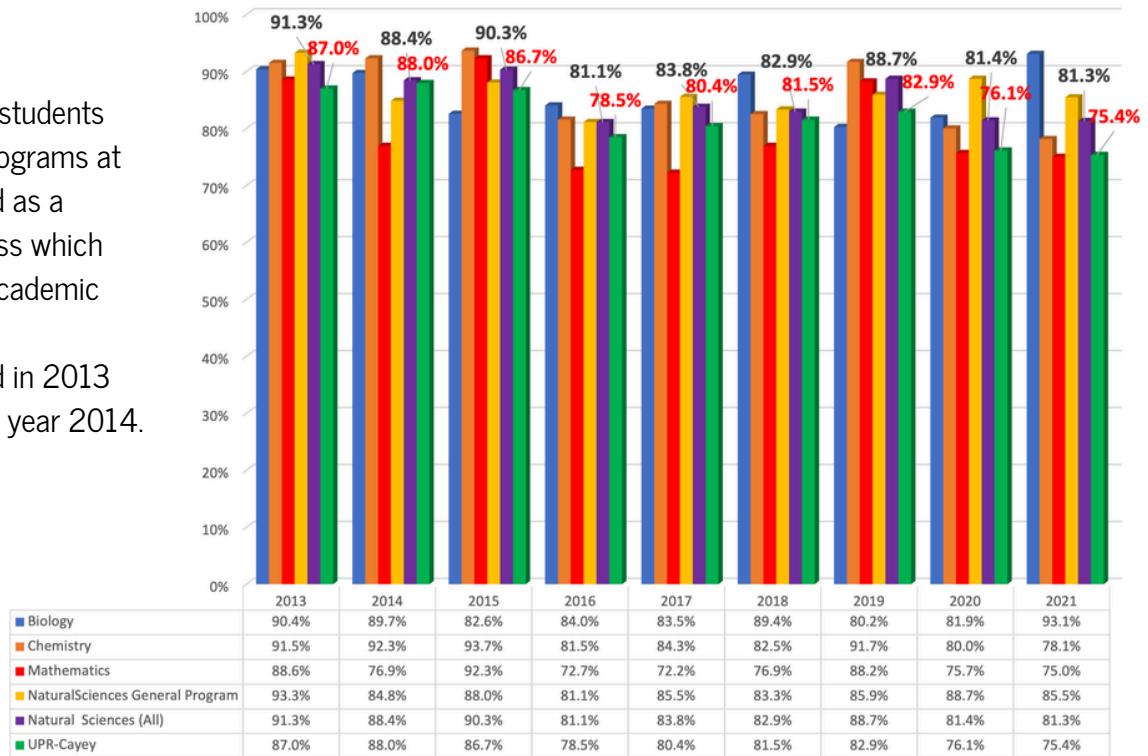
# NATURAL SCIENCES

## RETENTION & GRADUATION RATES

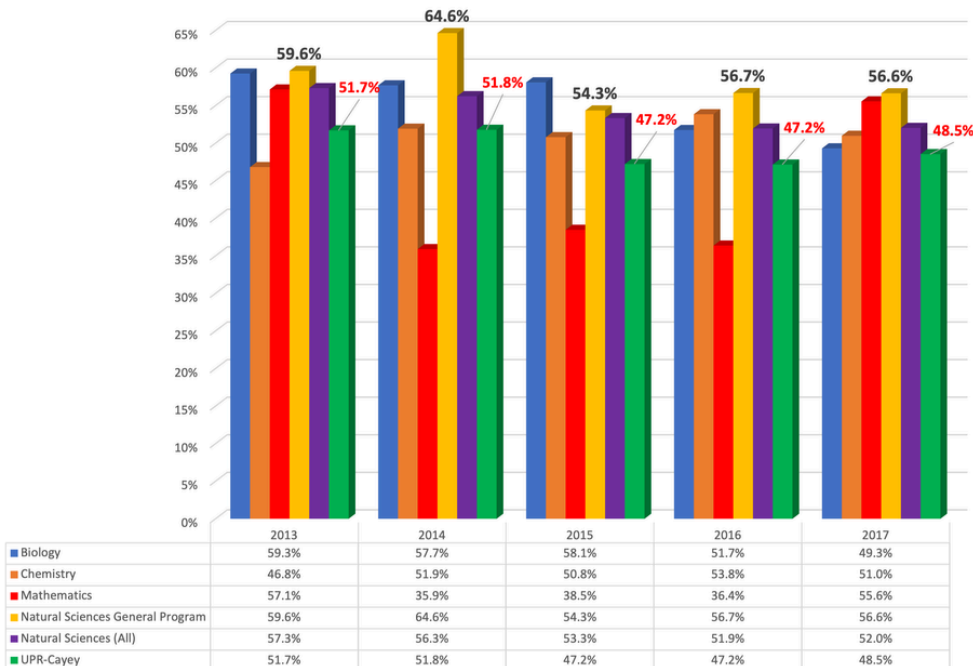
**Retention:** The rate at which students persist in their educational programs at an institution, often expressed as a percentage of an entering class which enrolls for each succeeding academic year.

e.g. The students who entered in 2013 pursued in the next academic year 2014.

Retention Rate of Natural Science Programs  
First-Time Cohorts 2013 to 2021



Graduation Rate (150%) of Natural Science Programs  
First-Time Cohorts 2013 to 2017



**Graduation Rate:** The rate at which students persist in their educational program at an institution, often expressed as a percentage of an entering class which enrolls for each succeeding academic year and graduates within the normal time period.

The expected time to graduate is 150%, or six (6) years.

e.g. The students who entered in 2013 were expected to graduate in 2019.

Oficina de Avalúo e Investigación Institucional

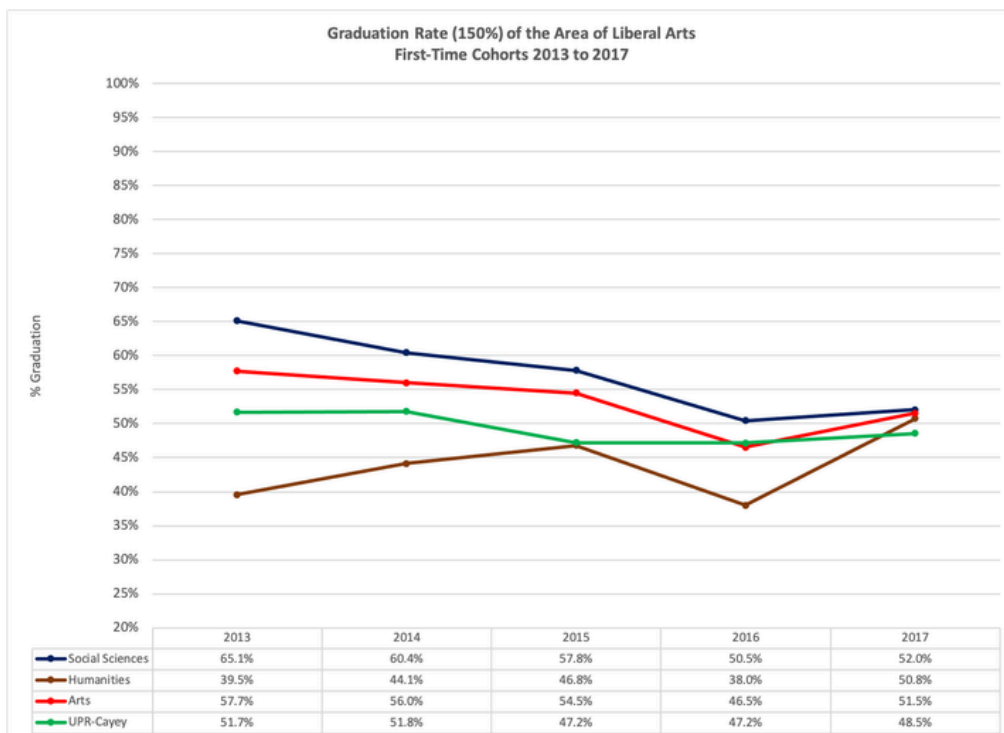
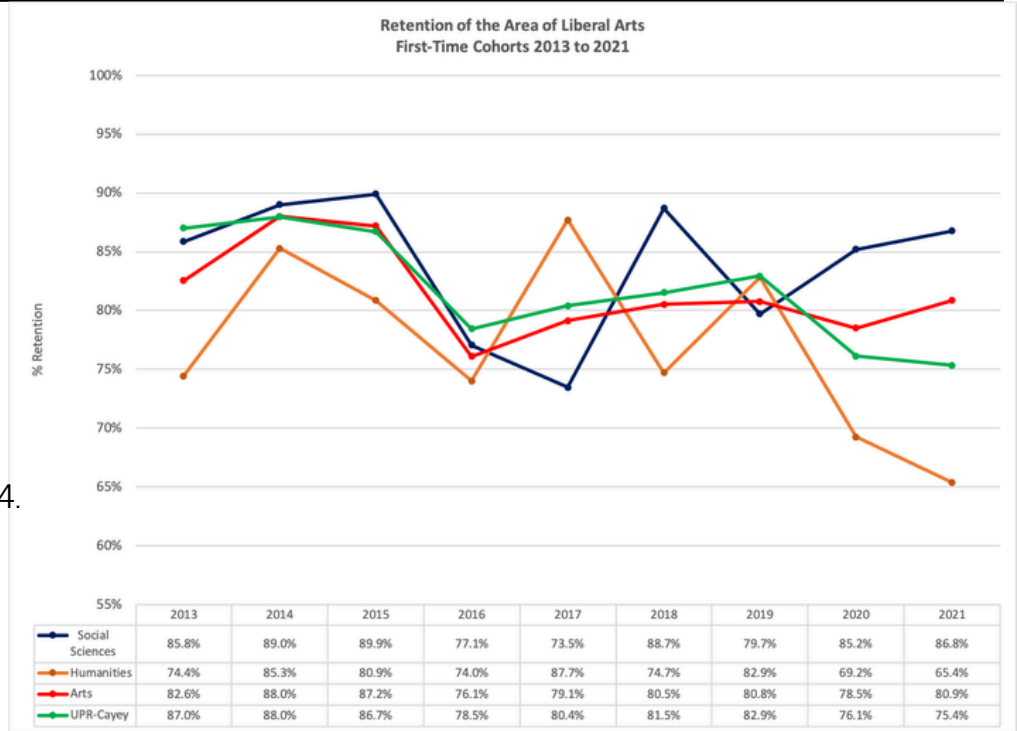
<https://www.cayey.upr.edu/oficina-de-avaluo-e-investigacion-institucional/>  
oaii.cayey@upr.edu

# ARTS

## RETENTION & GRADUATION RATES

**Retention:** The rate at which students persist in their educational programs at an institution, often expressed as a percentage of an entering class which enrolls for each succeeding academic year.

e.g. The students who entered in 2013 pursued in the next academic year 2014.



**Graduation Rate:** The rate at which students persist in their educational program at an institution, often expressed as a percentage of an entering class which enrolls for each succeeding academic year and graduates within the normal time period.

The expected time to graduate is 150%, or six (6) years.

e.g. The students who entered in 2013 were expected to graduate in 2019.